

## FREEDOM OF INFORMATION REDACTION SHEET

### Burrough Green c of E Primary School Supplemental Funding Agreement

### Supplemental Funding Agreement

#### Exemptions in full

n/a

#### Partial exemptions

Personal Information has been redacted from this document under Section 40 of the Freedom of Information (FOI) Act.

Section 40 of the FOI Act concerns personal data within the meaning of the Data Protection Act 1998.

#### Factors for disclosure

- further to the understanding of and increase participation in the public debate of issues concerning Academies.
- to ensure transparency in the accountability of public funds

#### Factors for Withholding

- To comply with obligations under the Data Protection Act

#### Reasons why public interest favours withholding information

Whilst releasing the majority of the Burrough Green Supplemental Funding Agreement will further the public understanding of Academies, the whole of these documents cannot be revealed. If the personal information redacted were to be revealed under the FOI Act, Personal Data and Commercial interests would be prejudiced.



Department  
for Education

# **Mainstream academy and free school: supplemental funding agreement**

**December 2020 v7**

# Contents

Information about the Academy:	4
<b>1. ESTABLISHING THE ACADEMY</b>	<b>9</b>
Definitions and interpretation	9
The Academy	10
<b>2. RUNNING OF THE ACADEMY</b>	<b>10</b>
Teachers and staff	10
Pupils	11
SEN Unit or Resourced Provision	11
Charging	11
Admissions	12
<b>3. GRANT FUNDING</b>	<b>16</b>
Calculation of GAG	16
Other relevant funding	17
<b>4. LAND</b>	<b>18</b>
<b>5. TERMINATION</b>	<b>24</b>
Termination by either party	24
Termination Warning Notice	25
Termination by the Secretary of State after inspection	26
Termination by the Secretary of State	27
Funding and admission during notice period	27
Notice of intention to terminate by Academy Trust	28
Effect of termination	30
<b>6. OTHER CONTRACTUAL ARRANGEMENTS</b>	<b>31</b>

Annexes	31
The Master Agreement	31
General	31
<b>Information Sharing with Local Authorities – Statutory Responsibilities</b>	32
<b>7. Plans</b>	<b>33</b>
<b>ANNEXES</b>	<b>37</b>
<b>ADMISSION OF CHILDREN AND YOUNG PEOPLE WITH EDUCATION, HEALTH AND CARE PLANS</b>	<b>37</b>

## **SUMMARY SHEET**

### **Information about the Academy:**

<b>Name of Academy Trust</b>	ACT MULTI ACADEMY TRUST
<b>Company number</b>	07708603
<b>Date of Master Funding Agreement</b>	29 August 2023
<b>Name of Academy</b>	Burrough Green CofE Primary School
<b>Opening date</b>	1 September 2024
<b>Type of academy (indicate whether academy or free school)</b>	Academy
<b>Religious designation</b>	Church of England
<b>Wholly or partly selective</b>	Not applicable
<b>Name of predecessor school (where applicable)</b>	Burrough Green CofE Primary School
<b>Capacity number (of statutory school age places)</b> <b>(if the Academy has a nursery provision, please provide a breakdown of capacity for nursery pupils and statutory school age places)</b>	117
<b>Age range (including nursery provision where the nursery is part of the school)</b>	4 to 11 years
<b>Number of sixth form places</b>	Not applicable
<b>Number of boarding places</b>	Not applicable
<b>SEN unit / Resource provision</b>	Not applicable
<b>Land arrangements</b> <b>(Version 1-8 or other)</b>	Land Clauses 2 and 3
<b>Academy and title number of Land (and Temporary Site)</b>	Permanent Site: land and buildings at Burrough Green School, Burrough Green, Cambridgeshire

	<p>Playing Field Land: land lying to the south-west of Bradley Road, Burrough Green, Newmarket forming part of the registered title of CB375049 and shown edged red on Plan 1 annexed to this Agreement</p> <p>Underlease Land: land lying on the west side of Bradley Road, Burrough Green forming part of the leasehold title CB356090 and shown edged red on Plan 2 annexed to this Agreement</p> <p>Land (as defined in the lease dated 2024 and made between (1) the Academy Trust and (2) The Trustees of the Knight Watson Charity forming part of title number CB375049 CB487789</p>
--	--

**Please confirm which clause variations have been applied or marked as 'Not used'**

Clause No.	Descriptor	Applied	Not used
1.I	Only applies to free schools and new provision academies		X
2.A.1	Clause applies where an academy was previously a VC or foundation school designated with a religious character	X	
2.C, 2.D	Only applies where the Academy has an SEN unit or Resourced Provision		X
2.E	Only applies where there was a predecessor independent school		X
2.E.1	Only applies to free Schools with nursery provision		X

Clause No.	Descriptor	Applied	Not used
2.G	Clause does not apply to free schools (unless there was a predecessor independent school), or new provision academies	X	
2.M	Clause applies only to academies and free schools designated with a religious character	X	
2.N	Clause applies only to academies that were formerly wholly selective grammar schools		X
2.O	Clause applies only to academies that were formerly partially selective grammar schools		X
2. P.1	Clause only applies to free schools or academy converter schools where there was a predecessor maintained school	X	
2.T	Clause applies to free schools and new provision academies designated with a religious character		X
2.W	Clause only applies where the Academy is designated with a religious character but was not previously a VC school or foundation school designated with a religious character (in which case use clause 2.Y instead). Also use 2.W where an academy was previously a VC school but has gone through a significant change process to adopt VA characteristics in parallel with converting to an academy		X
2.X	Clause only applies where the Academy has not been designated with a religious character		X
2.Y	Clause only applies where an academy was previously a VC school or foundation school designated with a religious character and should be used instead of clause 2.W. Where an academy was previously a VC school but has gone through a significant change process to adopt VA characteristics in parallel with converting to an academy, use clause 2.W instead.	X	

Clause No.	Descriptor	Applied	Not used
2.Yc)	Sub-clause applies if the Academy is designated with a denominational religious character – CE etc. rather than 'Christian'	X	
3.A – 3.F	Option 1 applies to converter and sponsored academies: if used delete option 2	X	
3.A – 3.F	Option 2 applies to free schools and new provision academies: if used delete option 1		X
3.H	Clause relating to Start-up only applies in some cases (does not apply to academy converters)		X
3.I.1	Only applies to Free schools with nursery provision		X
3.J	Clause only applies to full sponsored and intermediate sponsored academies with approved Academy Action Plans	X	
3.K	Clause does not apply to free schools (unless there was a predecessor independent school), or new provision academies	X	
5.G.1	Clause applies only to a boarding academy/free school.		X
5.I	Clause only applies to sponsored academies	X	
5.K	Clause applies to free schools and may be applied to new provision academies		X
5.L	Clause applies to free schools and may be applied to new provision academies		X
5.M	Clause applies to free schools and may be applied to new provision academies		X
5.N	Clause applies to free schools and may be applied to new provision academies		X
5.O	Clause applies to free schools and may be applied to new provision academies		X
6.H	Clause only applies to schools which are designated with a Church of England or	X	



Clause No.	Descriptor	Applied	Not used
	Roman Catholic character		

**Please identify any other variations from the model that apply to this Academy (e.g. clauses relating to PFI, or any required because the multi academy trust includes academies designated with different religious characters, or a mixture of those designated with a religious character, and those which are not):**

**Additional clauses will be supplied by your project lead if needed.**

Descriptor	Clause No.	Applied	Not used
Updated template wording used	4.J & 4.K	X	
Land clause added (land clause version 3) relating to the Lease from the Trustees	4.Q	X	
Underlease Land and reference to Underlease added to document there is going to be an underlease granted	4	X	
Charity Clause added. (DfE template charity wording)	4.O	X	
Charity Clause added (DfE template charity wording)	4.P	X	
Reference to Plans	7	x	

## **1. ESTABLISHING THE ACADEMY**

- 1.A This Agreement made between the Secretary of State for Education and ACT Multi Academy Trust is supplemental to the master funding agreement made between the same parties and dated 29 August 2023 (the “**Master Agreement**”).

### **Definitions and interpretation**

- 1.B Except as expressly provided in this Agreement words and expressions defined in the Master Agreement will have those same meanings in this Agreement.

- 1.C The following capitalised words and expressions will have the following meanings:

“The **Academy**” means the Burrough Green CofE Primary School.

“**Coasting**” has the meaning given by regulations under subsection (3) of section 60B of the Education and Inspections Act 2006 in relation to a school to which that section applies.

“**Guidance**” means guidance issued by or on behalf of the Secretary of State, as amended from time to time.

“**SEN**” means special educational needs and has the meaning set out in sections 20(1) and 21(2) of the Children and Families Act 2014.

“**Termination Notice**” means a notice sent by the Secretary of State to the Academy Trust, terminating this Agreement on the date specified in the notice.

“**Termination Warning Notice**” means a notice sent by the Secretary of State to the Academy Trust, stating his intention to terminate this Agreement.

- 1.D The Interpretation Act 1978 applies to this Agreement as it applies to an Act of Parliament.

- 1.E Reference in this Agreement to clauses and annexes will, unless otherwise stated, be to clauses and annexes to this Agreement.

### **The Academy**

- 1.F The Academy is a Sponsored Academy as defined in clause 1.4 of the Master Agreement.
- 1.G The Academy Trust will establish and maintain the Academy in accordance with the Master Agreement and this Agreement.
- 1.H The Academy Trust will open the Academy on 1 September 2024.
- 1.I [Not Used]

## **2. RUNNING OF THE ACADEMY**

### **Teachers and staff**

- 2.A Subject to clause 2.A.2 and Annex A of this Agreement and section 67 of the Children and Families Act 2014, the Academy Trust may, in accordance with any relevant Guidance, employ anyone it believes is suitably qualified or is otherwise eligible to plan and prepare lessons and courses for pupils, teach pupils, and assess and report on pupils' development, progress and attainment.

- 2.A.1 The Academy Trust shall in relation to:

- a) any person who may apply for a position as an employee or to be otherwise engaged by the Academy Trust, and
- b) any employee with whom the Academy Trust enters into a contract of employment or a contract for services,

act in accordance with and hereby agrees to be bound by section 124AA of the School Standards and Framework Act 1998 ("SSFA"), so far as those provisions apply to, and as if the Academy Trust were, a voluntary controlled or foundation school designated by an order under section 69(3) of the SSFA

as a school having a religious character. For the avoidance of doubt, the Academy Trust agrees and acknowledges that section 124AA of the SSFA shall not therefore apply to it in relation to the persons referred to at (a) and (b) above.

- 2.A.2 The Academy Trust must designate a staff member at the Academy as responsible for promoting the educational achievement of registered pupils at the Academy who are being looked after by a la, or are no longer looked after by a la because of an adoption, special guardianship or child arrangements order, or because they have been adopted from 'state care' outside England and Wales, and in doing so must comply with the law, regulations and Guidance that apply to maintained schools. The Academy Trust must ensure the designated person undertakes appropriate training and has regard to any Guidance.

## **Pupils**

- 2.B The planned capacity of the Academy is 117 and the age range is 4 to 11 years. For the avoidance of doubt, notwithstanding that an individual applicant's age might be outside the specified age range of the Academy, the Academy is not prevented from considering an application made by the child's Parent(s) in order to comply with the relevant paragraph of the Schools Admissions Code ('Admission of children outside their normal age group'), to request that the child be admitted to the school outside of the child's normal age group. Where such a request is agreed, the child should be educated in an existing year group. The Academy will be an all ability inclusive mixed sex school.

## **SEN Unit or Resourced Provision**

- 2.C [Not Used]

- 2.D [Not Used]

## **Charging**

- 2.E [Not Used]

## 2.E.1 [Not Used]

### **Admissions**

- 2.F Subject to clauses 2.L and 2.M the Academy Trust will act in accordance with, and will ensure that its Independent Appeal Panel is trained to act in accordance with, the School Admissions Code and School Admission Appeals Code published by the Department for Education (the “Codes”) and all relevant admissions law as they apply to foundation and voluntary aided schools, and with equalities law. Reference in the Codes or legislation to “admission authorities” will be deemed to be references to the Academy Trust.
- 2.G Pupils on roll in a Predecessor School which was a maintained or independent school will transfer automatically to the Academy on opening. All children already offered a place at that Predecessor School must be admitted to the Academy.
- 2.H The Academy Trust must participate in the local Fair Access Protocol. The Academy Trust must participate in the coordinated admission arrangements operated by the LA in whose area the Academy is situated. If the Academy is a free school, the Academy Trust is not required to participate in coordination for its first intake of pupils.
- 2.I [Not used]
- 2.J [Not used]
- 2.K [Not used]
- 2.L The Secretary of State may:
- a) direct the Academy Trust to admit a named pupil to the Academy:
    - i. following an application from a LA including complying with a school attendance order as defined in section 437 of the Education Act 1996. Before doing so the Secretary of State will consult the Academy Trust; or

- ii. where in relation to a specific child or children the Academy Trust has failed to act in accordance with the Codes or this Agreement or has otherwise acted unlawfully; or
  - b) direct the Academy Trust to amend its admission arrangements where they do not comply with the Codes or this Agreement, or are otherwise unlawful.
- 2.M The Academy is an Academy designated with a Church of England religious character. The relevant religious authority is Diocese of Ely.
- 2.N [Not Used]
- 2.O [Not Used]
- 2.P The Academy Trust must make arrangements to ensure an independent appeals panel is established for the Academy and its clerk and members are trained to act in accordance with the Codes. The Academy Trust must ensure that parents and 'relevant children' (as described in the Codes) are informed of their right to appeal to an Independent Appeal Panel if they are dissatisfied with an admission decision of the Academy Trust. The arrangements for appeals must comply with the Codes as they apply to foundation and voluntary aided schools. The determination of the Independent Appeal Panel is binding on all parties.
- 2.P.1 The Academy Trust will treat any decision of an Independent Appeal Panel constituted further to arrangements made by the admission authority of a Predecessor School under section 94 of the School Standards and Framework Act 1998 as binding on the Academy Trust, as though the Academy Trust had made the decision subject to the appeal.
- 2.Q Subject to clause 2.R, the meaning of "**relevant area**" for the purposes of consultation requirements in relation to admission arrangements is that determined by the relevant LA for maintained schools in the area in accordance with the Education (Relevant Areas for Consultation on Admission Arrangements) Regulations 1999.

- 2.R If the Academy does not consider the relevant area determined by the LA for the maintained schools in the area to be appropriate, it must apply to the Secretary of State by 1 August before the academic year in question for a determination of the appropriate relevant area for the Academy, setting out the reasons for this view. The Secretary of State will consult the Academy Trust and the LA in whose area the Academy is situated in reaching a decision.
- 2.S The Office of the Schools Adjudicator ("OSA") will consider objections to the Academy's admission arrangements (except objections against any agreed derogations from the provisions of the Codes specified in this Agreement, over which it has no jurisdiction). The Academy Trust must therefore make it clear, when determining the Academy's admission arrangements, that objections should be submitted to the OSA. The OSA's determination of an objection is binding on the Academy and the Academy Trust must make appropriate changes to its admission arrangements to give effect to the Adjudicator's decision within two months of the decision (or by 28 February following the decision, whichever is sooner), unless an alternative timescale is specified by the Adjudicator.
- 2.T [Not used]

### **Curriculum**

- 2.U The Academy Trust must provide for the teaching of religious education and a daily act of collective worship at the Academy.
- 2.V The Academy Trust must comply with section 71(1)-(6) and (8) of the School Standards and Framework Act 1998 as if the Academy were a community, foundation or voluntary school, and as if references to "religious education" and "religious worship" in that section were references to the religious education and religious worship provided by the Academy in accordance with clause 2.Y.
- 2.W [Not Used]

2.X [Not Used]

2.Y Subject to clause 2.V, the requirements for religious education and collective worship are as follows:

- a) subject to paragraph 3 of Schedule 19 to the School Standards and Framework Act 1998, which will apply as if the Academy were a foundation school or voluntary controlled school with a religious character, provision must be made for religious education to be given to all pupils at the Academy in accordance with the requirements for agreed syllabuses in section 375(3) of the Education Act 1996;
- b) the Academy Trust must comply with section 70(1) of, and Schedule 20 to, the School Standards and Framework Act 1998 as if the Academy were a foundation school with a religious character or a voluntary school, and as if references to “the required collective worship” were references to collective worship in accordance with the tenets and practices of the Academy’s specified religion or religious denomination;
- c) the Academy Trust must ensure that the quality of the religious education given to pupils at the Academy and the contents of the Academy’s collective worship, given in accordance with the tenets and practices of its specific religion or religious denomination, is inspected. The inspection must be conducted by a person chosen by the Academy Trust and the Academy Trust must secure that the inspection complies with statutory provisions and regulations which would apply if the Academy were a foundation or voluntary school designated as having a religious character.

2.Z The Academy Trust must comply with paragraph 2A of the Schedule to The Education (Independent School Standards) Regulations 2014 in relation to the provision of Relationships Education, Relationships and Sex Education and Health Education.

2.AA The Academy Trust must prevent political indoctrination, and secure the balanced treatment of political issues, in line with the requirements for



maintained schools set out in the Education Act 1996, and have regard to any Guidance.

### **3. GRANT FUNDING**

#### **Calculation of GAG**

3A-3D. Not used.

3.E The Secretary of State will calculate GAG based on the pupil count at the Academy. In order to calculate GAG for the Academy Financial Year in which the Academy opens, the pupil count will be determined on the same basis as that used by the relevant LA for determining the budget of the maintained Predecessor School.

3.F For Academy Financial Years after that referred to in clause 3.E, the basis of the pupil count for determining GAG will be:

- a) for pupils in Year 11 and below, the Schools Census which is used to fund maintained schools for the financial year overlapping with the Academy Financial Year in question; and
- b) for pupils in Year 12 and above, the formula which is in use at the time for maintained schools.

3.G The Secretary of State may, at his discretion, adjust the basis of the pupil count to take account of any diseconomies of scale which may affect the Academy if it is operating below the planned capacity in clause 2.B. If such an adjustment is made in any Academy Financial Year, this will not change the basis of the pupil count for calculating the following Academy Financial Year's GAG. If the Secretary of State has indicated that additional grant may be payable in such circumstances, the Academy Trust will bid for this additional grant based on need and providing appropriate supporting evidence. The Secretary of State may accept or refuse the bid at his discretion.

3.H [Not Used]

3.I The Secretary of State recognises that if a Termination Notice or a Termination Warning Notice is served, or the Master Agreement is otherwise terminated, the intake of new pupils during the notice period may decline and therefore payments based on the number of pupils attending the Academy may be insufficient to meet the Academy's needs. In these circumstances the Secretary of State may pay a larger GAG in the notice period, to enable the Academy to operate effectively.

3.I.1. [Not Used]

### **Other relevant funding**

3.J The Academy Trust may apply to the Secretary of State for financial assistance in relation to proposed redundancies at the Academy. In response to such an application, the Secretary of State may at his discretion agree to meet a proportion of the Academy Trust's costs arising from the inclusion of academies in the schedules to the Redundancy Payments (Continuity of Employment in Local Government) (Modification) Order 1999. The Secretary of State may agree to meet the costs of an employee's prior eligible service, being service before the Academy opened, but the Academy Trust must meet the costs of service after the Academy opened. The Secretary of State's financial assistance in this respect will only be available in the first two years after the Academy opens.

3.K The Secretary of State may pay the Academy Trust's costs in connection with the transfer of employees from a Predecessor School under the Transfer of Undertakings (Protection of Employment) Regulations 2006. Such payment will be agreed on a case-by-case basis. The Academy Trust must not budget for such a payment unless the Secretary of State confirms in writing that it will be paid.

### **Carrying forward of funds**

- 3.L Any additional grant made in accordance with clause 3.I, for a period after the Secretary of State has served a Termination Notice or a Termination Warning Notice under this Agreement, or otherwise terminates the Master Agreement, may be carried forward without limitation or deduction until the circumstances set out in clause 3.I cease to apply or the Academy closes.

### **4. LAND**

**"Playing Field Land"** means the land lying to the south-west of Bradley Road, Burrough Green, Newmarket, being part of the land registered with title number CB375049 and demised by the Lease.

**"Lease"** means the lease, any subsequent variations to the lease or other occupational agreement between the Academy Trust and a third party (the **"Landlord"**) under which the Academy Trust derives title to the Playing Field Land.

**"Underlease Land"** means the land lying on the west side of Bradley Road, Burrough Green being part of the land registered with leasehold title CB356090 and demised by the Underlease.

**"Underlease"** means the underlease, any subsequent variation to the underlease or other occupation agreement between the Academy Trust and a third party (the **"Landlord"**) under which the Academy Trust derives title to the Underlease Land.

**"Property Notice"** means any order, notice, proposal, demand or other requirement issued by any competent authority (including the Landlord) which materially affects the Academy Trust's ability to use the Playing Field Land and/or the Underlease Land for the purposes of the Academy or any correspondence that affects the extent of the Playing Field Land and/or the Underlease Land.

### **Restrictions on Land transfer**

- 4.A The Academy Trust must:

- a) within 28 days of the signing of this Agreement in circumstances where the Playing Field Land and/or the Underlease Land is transferred to the Academy Trust prior to the date of this Agreement, or otherwise within 28 days of the transfer of the Playing Field Land and/or the Underlease Land to the Academy Trust, apply to the Playing Field Land and the Underlease Land at the Land Registry using Form RX1 for the

following restriction (the “**Restriction**”) to be entered in the proprietorship register for the Playing Field Land and the Underlease Land:

*No disposition of the registered estate by the proprietor of the registered estate, or by the proprietor of any registered charge, not being a charge registered before the entry of this restriction, is to be registered without a written consent signed by the Secretary of State for Education, of Sanctuary Buildings, Great Smith Street, London SW1P 3BT;*

- b) take any further steps reasonably required to ensure that the Restriction is entered on the proprietorship register;
- c) promptly confirm to the Secretary of State when the Restriction has been registered;
- d) if it has not registered the Restriction, permit the Secretary of State to do so in its place; and
- e) not, without the Secretary of State’s consent, apply to disapply, modify, cancel or remove the Restriction, whether by itself, a holding company, a subsidiary company, or a receiver, administrator or liquidator acting in the name of the Academy Trust.

#### **Obligations of the Academy Trust**

- 4.B The Academy Trust must keep the Playing Field Land and the Underlease Land clean and tidy and make good any damage or deterioration to the Playing Field Land and the Underlease Land. The Academy Trust must not do anything to lessen the value or marketability of the Playing Field Land and the Underlease Land without the Secretary of State’s consent.
- 4.C The Academy Trust must comply with the Lease and the Underlease and promptly enforce its rights against the Landlord.
- 4.D The Academy Trust must not, without the Secretary of State’s consent:
  - a) terminate, vary, surrender, renew, dispose of or agree any revised rent under the Lease or the Underlease;

- b) grant any consent or licence; or
- c) create or allow any encumbrance; or
- d) part with or share possession or occupation; or
- e) enter into any onerous or restrictive obligations,

in respect of all or part of the Playing Field Land and/or the Underlease Land provided that the Academy Trust may grant a licence or share occupation of part of the Playing Field Land and/or the Underlease Land with a proprietor or proposed proprietor of an academy or a body or individual providing services or facilities which are within the uses permitted by the Lease and/or the Underlease and where no relationship of landlord and tenant arises as a result of such occupation.

### **Option**

4.E The Academy Trust grants and the Secretary of State accepts an option (the "**Option**") to acquire the Playing Field Land and the Underlease Land at nil consideration. The Secretary of State may exercise the Option in writing:

- a) if this Agreement is terminated for any reason;
- b) at any time on or after the issue of a Termination Notice; or
- c) if, under clause 4.K, the Academy Trust and the Secretary of State agree that part of the Playing Field Land and/or the Underlease Land should be demised or subleased to another academy trust;
- d) if, under clause 4.M, the Academy Trust cannot use all or part of the Playing Field Land and/or the Underlease Land as the permanent site of the Academy.

4.E.1 If the Option is exercised, completion will take place

- a) 28 days after the exercise date where a Termination Notice has not been issued; or
- b) where a Termination Notice has been issued, the date specified in the Termination Notice as to when this Agreement shall terminate

and in either case in accordance with the Law Society's Standard Conditions of Sale for Commercial Property in force at that date.

### **Option notice**

4.F The Academy Trust:

- a) must, within 14 days after acquiring the Playing Field Land and/or the Underlease Land or, if later, after signing this Agreement, apply to the Land Registry on Form AN1 (including a copy of this Agreement) for a notice of the Option (the “**Option Notice**”) to be entered in the register, taking any further steps required to have the Option Notice registered and promptly confirming to the Secretary of State when this has been done;
- b) if it has not registered the Option Notice, agrees that the Secretary of State may apply to register it using Form UN1;
- c) must not, without the Secretary of State’s consent, apply to disapply, modify or remove the Option Notice, whether by itself, a holding company, a subsidiary company, or a receiver, administrator or liquidator acting in the name of the Academy Trust, and
- d) must, in the case of previously unregistered land, within 14 days after acquiring the Playing Field Land and/or the Underlease Land or, if later, after signing this Agreement, apply to register a Class C(iv) land charge in the Land Charges Registry, and send the Secretary of State a copy of the relevant entry within 7 days after the registration has been completed. If the Secretary of State considers that the Academy Trust has not complied with this clause, he may apply to secure the registration.

**Property notices**

4.G If the Academy Trust receives a Property Notice, it must:

- a) send a copy of it to the Secretary of State within 14 days, stating how the Academy Trust intends to respond to it;
- b) promptly give the Secretary of State all the information he asks for about it;

- c) allow the Secretary of State to take all necessary action, with or instead of the Academy Trust, to comply with it, and
- d) use its best endeavours to help the Secretary of State in connection with it.

#### **Breach of Lease and/or the Underlease**

4.H If the Academy Trust is, or if it is reasonably foreseeable that it will be, in material breach of the Lease and/or the Underlease, the Academy Trust must immediately give written notice to the Secretary of State stating what the breach is and what action the Academy Trust has taken or proposes to take to remedy it, including timescales where appropriate.

4.I After notifying the Secretary of State under clause 4.H, the Academy Trust must:

- a) promptly give the Secretary of State all the information he asks for about the breach;
- b) allow the Secretary of State to take all necessary action, with or instead of the Academy Trust, to remedy or prevent the breach, and
- c) use its best endeavours to help the Secretary of State to remedy or prevent the breach.

#### **Sharing the Playing Field Land and/or the Underlease Land**

4.J Where:

- a) the Secretary of State identifies basic or parental need for additional places in the area in which the Academy is situated; and
- b) the Secretary of State then considers that not all the Playing Field Land and/or the Underlease Land is needed for the operation of the Academy at planned capacity,

the Secretary of State must consult with the Academy Trust to determine whether part of the Playing Field Land and/or the Underlease Land could be demised or sublet to another academy trust, as the Secretary of State

considers appropriate, for the purpose of that academy trust establishing and maintaining an educational institution on the Playing Field Land and/or the Underlease Land.

4.K To the extent the Academy Trust and the Secretary of State agree to part of the Playing Field Land and/or the Underlease Land being demised or sublet in accordance with clause 4.J, and provided that:

- (i) the part of the Playing Field Land and/or the Underlease Land being demised or sublet or otherwise made available is, in the Secretary of State's reasonable opinion, surplus to the Academy's needs to fulfil its obligations under this Agreement; and
- (ii) the alienation of the relevant part of the Playing Field Land and/or the Underlease Land would not be detrimental to the operation of the Academy by the Academy Trust

the Academy trust must use its reasonable endeavours to procure all necessary consents including either the approval of the Landlord or any necessary amendments to the Lease and/or the Underlease in order to enable it to demise, sublet or otherwise make available the relevant part of the Playing Field Land and/or the Underlease Land to the incoming academy trust and shall enter into any legal arrangements which the Secretary of State requires for this purpose, subject to all restrictions governing the Academy Trust's ownership, occupation and use of the Playing Field Land and/or the Underlease Land and the Academy Trust's obligations under charity law. The Secretary of State shall meet the necessary and reasonable costs incurred by the Academy Trust in connection with this clause.

4.L For the purposes of clause 4.J:

- a) a **basic need** will arise when the forecast demand for pupil places in the area where the Academy is situated is greater than the existing capacity to provide them;



- b) a **parental need** will arise when the Department for Education is actually aware of an additional demand for pupil places in the area where the Academy is situated, following representations from parents in that area; and
- c) **planned capacity** has the meaning given in clause 2.B.

4.M If the Academy Trust cannot use all or part of the Playing Field Land and/or the Underlease Land as the permanent site of the Academy but the Secretary of State agrees not to terminate this Agreement on that basis, the Secretary of State may notify the Academy Trust that he intends to exercise the Option to transfer the Playing Field Land and/or the Underlease Land for nil consideration to himself or his nominee.

4.N On or following the issue of a Termination Notice, the Secretary of State may give notice that he intends to exercise his rights under clause 4.E. Any such notice is without prejudice to his right to exercise any other rights available to him.

4.O The Playing Field Land will as a result of the Lease be held by the Academy Trust, an exempt charity.

4.P The Underlease Land will as a result of the Underlease be held by the Academy Trust, an exempt charity.

4.Q The parties' rights and obligations in respect of the Land are set out in the lease dated September 2024 and made between (1) the Academy Trust and (2) The Trustees of the Knight Watson Charity. For the purposes of this clause, the Land has the meaning given in the lease. The Land is shown edged red on Plan 3.

## 5. **TERMINATION**

### **Termination by either party**

5.A Either party may give at least seven Academy Financial Years' notice to

terminate this Agreement. Such termination would take effect on 31 August of the relevant year.

### **Termination Warning Notice**

5.B The Secretary of State may serve a Termination Warning Notice where he considers that:

- a) the Academy Trust has breached the provisions of this Agreement or the Master Agreement; or
- b) the standards of performance of pupils at the Academy are unacceptably low; or
- c) there has been a serious breakdown in the way the Academy is managed or governed; or
- d) the safety of pupils or staff is threatened, including due to breakdown of discipline; or
- e) the Academy is Coasting provided he has notified the Academy Trust that it is Coasting.

5.C A Termination Warning Notice served under clause 5.B will specify:

- a) the action the Academy Trust must take;
- b) the date by which the action must be completed; and
- c) the date by which the Academy Trust must make any representations, or confirm that it agrees to undertake the specified action.

5.D The Secretary of State will consider any representations from the Academy Trust which he receives by the date specified in the Termination Warning Notice. The Secretary of State may amend the Termination Warning Notice to specify further action which the Academy Trust must take, and the date by which it must be completed.

5.E If the Secretary of State considers that the Academy Trust has not responded

to the Termination Warning Notice as specified under clause 5.C(c), or has not completed the action required in the Termination Warning Notice as specified under clauses 5.C(a) and (b) (and any further action specified under clause 5.D) he may serve a Termination Notice.

#### **Termination by the Secretary of State after inspection**

5.F If the Chief Inspector gives notice to the Academy Trust that:

- a) special measures are required to be taken in relation to the Academy;  
or
- b) the Academy requires significant improvement

the Secretary of State may serve a Termination Warning Notice, specifying the date by which the Academy Trust must make any representations.

5.G In deciding whether to give notice of his intention to terminate under clause 5.F, the Secretary of State will have due regard to the overall performance of the Academy Trust.

5.G.1 [Not Used]

5.H If the Secretary of State has served a Termination Warning Notice under clause 5.F and:

- a) has not received any representations from the Academy Trust by the date specified in the notice; or
- b) having considered the representations made by the Academy Trust remains satisfied that this Agreement should be terminated;

he may serve a Termination Notice.

5.I If the Chief Inspector gives a notice referred to in clause 5.F to the Academy Trust within two years after the Academy opened, the Secretary of State may only serve a Termination Warning Notice under clause 5.F if:

- a) the Chief Inspector has held a monitoring inspection under section 8 of

the Education Act 2005 later than two years after the Academy opened; and

- b) the Chief Inspector considers that the Academy is not making enough progress towards the removal of the designation referred to in his notice.

Nothing in this clause prevents or prejudices the Secretary of State exercising any other rights arising from or under this Agreement (including, for the avoidance of doubt, any rights under clauses 5.B to 5.E).

### **Termination by the Secretary of State**

- 5.J If the Secretary of State has determined that the Academy will be removed from the Register of Independent Schools and no appeal against that determination is pending, he may serve a Termination Notice.

5.K [Not Used]

5.L [Not Used]

5.M [Not Used]

5.N [Not Used]

5.O [Not Used]

### **Funding and admission during notice period**

- 5.P If the Secretary of State serves a Termination Notice under clause 5.A, the Academy Trust may continue during the notice period to admit pupils to the Academy, and to receive GAG and EAG, in accordance with this Agreement.

- 5.Q If the Secretary of State serves a Termination Warning Notice or a Termination Notice otherwise than under clause 5.A, the Academy Trust may continue during the notice period to admit pupils to the Academy (unless the Secretary of State specifies otherwise), and to receive GAG and EAG, in accordance with this Agreement.

### **Notice of intention to terminate by Academy Trust**

- 5.R The Secretary of State will, before the start of each Academy Financial Year, provide the Academy Trust with a final funding allocation indicating the level of GAG and EAG to be provided in the next Academy Financial Year (the **"Funding Allocation"**).
- 5.S If the Academy Trust is of the opinion that, after receipt of the Funding Allocation for the next Academy Financial Year (the **"Critical Year"**) and after taking into account all other resources likely to be available to the Academy, including other funds that are likely to be available to the Academy from other academies operated by the Academy Trust (**"All Other Resources"**), it is likely that the cost of running the Academy during the Critical Year would cause the Academy Trust to become insolvent (and for this reason only) then the Academy Trust may give written notice of its intention to terminate this Agreement on 31 August before the Critical Year.
- 5.T Any notice given by the Academy Trust under clause 5.S must be provided to the Secretary of State within six weeks of the Secretary of State issuing the Funding Allocation. The notice given by the Academy Trust under clause 5.S must specify:
- a) the grounds upon which the Academy Trust's opinion is based, including:
    - i. evidence of those grounds;
    - ii. any professional accounting advice the Academy Trust has received;
    - iii. a detailed statement of steps which the Academy Trust proposes to take to ensure that the running costs of the Academy are reduced such that costs are less than the Funding Allocation and All Other Resources, and the period of time within which such steps will be taken; and
  - b) the shortfall in the Critical Year between the Funding Allocation and All

Other Resources expected to be available to the Academy Trust to run the Academy and the projected expenditure on the Academy; and

- c) a detailed budget of income and expenditure for the Academy during the Critical Year (the “**Projected Budget**”).

5.U Both parties will use their best endeavours to agree whether or not the cost of running the Academy during the Critical Year would cause the Academy Trust to become insolvent. Both parties recognise that they will need to engage in a constructive dialogue at the time about how best to provide education for the pupils at the Academy and use their best endeavours to agree a practical solution to the problem.

5.V If no agreement is reached by 30 April (or another date if agreed between the parties) as to whether the cost of running the Academy during the Critical Year would cause the Academy Trust to become insolvent, then that question will be referred to an independent expert (the “**Expert**”) for resolution. The Expert’s determination will be final and binding on both parties. The Expert will be requested to specify in his determination the amount of the shortfall in funding (the “**Shortfall**”).

5.W The Expert will be an insolvency practitioner with significant professional experience of educational institutions or academies. If the parties fail to agree upon the appointment of the Expert then the Expert will be appointed by the President of the Institute of Chartered Accountants in England and Wales. The Expert’s fees will be borne equally between the parties.

5.X The Expert will be required in reaching his determination to take account of advice from an educational specialist who is professionally familiar with the issues arising from the budget management of schools. If the parties fail to agree upon the appointment of the educational specialist then the educational specialist will be appointed by the Chairman of the Specialist Schools and Academies Trust (or any successor or equivalent body). The educational specialist’s fees will be borne equally between the parties.

5.Y If the Expert determines that the cost of running the Academy during the

Critical Year would cause the Academy Trust to become insolvent, and the Secretary of State will not have agreed to provide sufficient additional funding to cover the Shortfall, then the Academy Trust will be entitled to terminate this Agreement, by notice expiring on 31 August before the Critical Year. Any such notice will be given within 21 days after (a) the Expert's determination will have been given to the parties or (b), if later, the Secretary of State will have given written notice of his refusal to provide sufficient additional funding for the Academy to cover the Shortfall.

#### **Effect of termination**

- 5.Z If this Agreement is terminated, the Academy will cease to be an Academy within the meaning of sections 1 and 1A of the Academies Act 2010.
- 5.AA Subject to clauses 5.BB and 5.CC, if the Secretary of State terminates this Agreement under clause 5.A, he will indemnify the Academy Trust. If the Secretary of State terminates this Agreement otherwise than under clause 5.A, he may at his discretion indemnify or compensate the Academy Trust.
- 5.BB The amount of any such indemnity or compensation will be determined by the Secretary of State, having regard to representations made to him by the Academy Trust, and will be paid as and when the Secretary of State considers appropriate.
- 5.CC The categories of expenditure incurred by the Academy Trust in consequence of termination, for which the Secretary of State may indemnify the Academy Trust under clauses 5.AA, may include:
- a) staff compensation and redundancy payments;
  - b) compensation payments in respect of broken contracts;
  - c) expenses of disposing of assets or adapting them for other purposes;
  - d) legal and other professional fees; and
  - e) dissolution expenses.

5.DD If this Agreement is terminated, and the Academy Trust owns capital assets which have been partly or wholly funded by HM Government, the Academy Trust must, as soon as possible after the termination date:

- a) transfer a proportion of those capital assets, equal to the proportion of the original financial contribution made by HM Government, to a nominee of the Secretary of State to use for educational purposes; or
- b) if the Secretary of State directs that a transfer under clause 5.DD(a) is not required, pay to the Secretary of State at the termination date (or, by agreement with the Secretary of State, at the date of their subsequent disposal) a sum equivalent to the proportion of the original financial contribution made by HM Government.

5.EE The Secretary of State may:

- a) waive all or part of the repayment due under sub-clause 5.DD(b) if the Academy Trust obtains his permission to invest the sale proceeds for its charitable purposes; or
- b) direct the Academy Trust to pay all or part of the sale proceeds to the relevant LA.

## **6. OTHER CONTRACTUAL ARRANGEMENTS**

### **Annexes**

6.A Any annexes to this Agreement form part of and are incorporated into this Agreement.

### **The Master Agreement**

6.B Except as expressly provided in this Agreement, all provisions of the Master Agreement have full force and effect.

### **General**

6.C The Academy Trust cannot assign this Agreement.



- 6.D Failure to exercise, or a delay in exercising, any right or remedy of the Secretary of State under this Agreement (including the right to terminate this Agreement), or a single or partial exercise of such a right or remedy, is not a waiver of, and does not prevent or restrict any initial or further exercise of, that or any other right or remedy.
- 6.E Termination of this Agreement will not affect the accrued rights, remedies, obligations or liabilities of the parties existing at termination.
- 6.F This Agreement may be executed in any number of counterparts, each of which when executed and delivered shall constitute a duplicate original, but all of which will together constitute the same agreement.
- 6.G This Agreement and any dispute or claim arising out of or in connection with it or its subject matter or formation (including non-contractual disputes or claims) shall be governed by and construed in accordance with the law of England and Wales, and submitted to the exclusive jurisdiction of the courts of England and Wales.
- 6.H The Secretary of State agrees that this Agreement shall be interpreted in a way which is compatible with the provisions of clauses 20-20F and 23A-G (if used) of the Church Supplemental Agreement dated 2024 and made between (1) the Secretary of State; (2) the Academy Trust; (3) Knight & Watson Charity ; and (4) the Board of Education of the Diocese of Ely.

#### **Information Sharing with Local Authorities – Statutory Responsibilities**

- 6.I The Academy Trust must provide:
- a) the name, address and date of birth of the pupil or student;
  - b) the name and address of a parent of the pupil or student;
  - c) information in the institution's possession about the pupil or student (except if the pupil or student concerned (in the case of a pupil or student who has attained the age of 16) or a parent of the pupil or student concerned (in the case of a pupil or student who has not attained the age

of 16) has instructed the Academy Trust not to provide information of that kind);

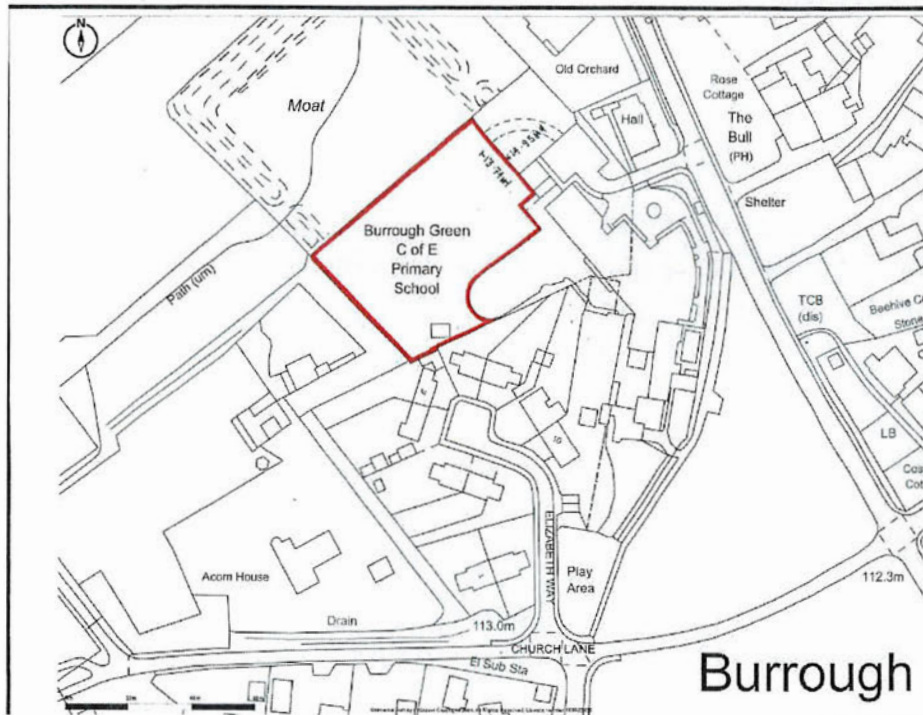
upon request under section 14 of the Education and Skills Act 2008 from a local authority (for the purpose of enabling or assisting it to exercise its functions under Part 1 of that Act); or

upon request under section 72 of that Act from a body providing services under sections 68 or 70(1)(b) of the Act (for the purposes of providing such services).

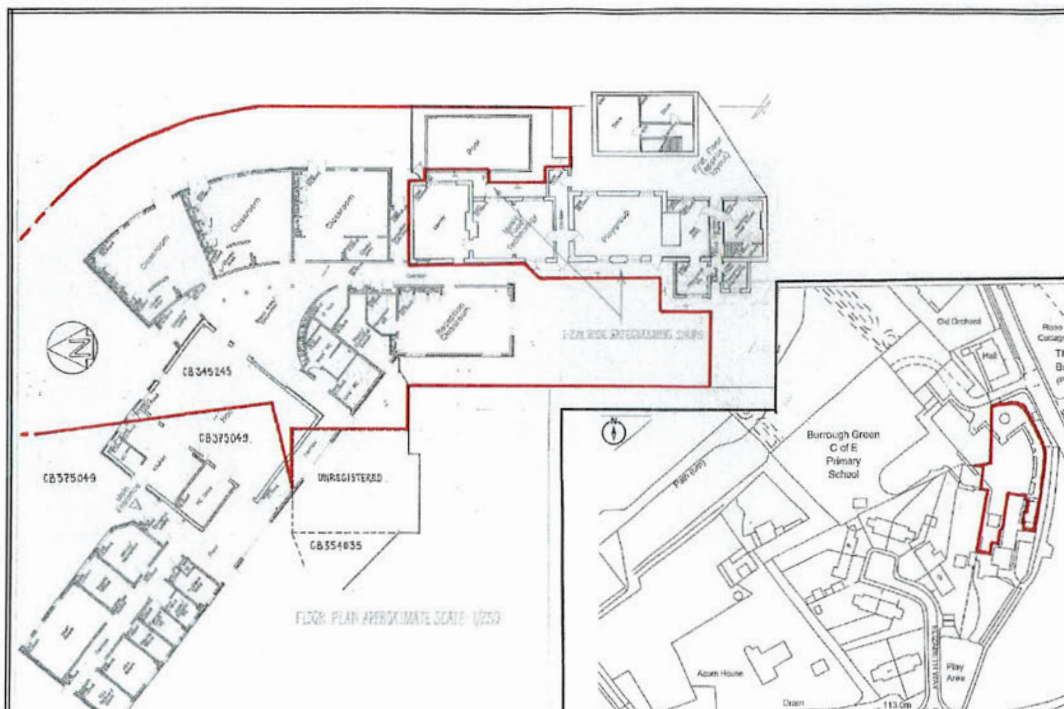
## **7. Plans**

- (a) The Playing Field Land is shown edged red on the plan annexed to this Agreement and labelled "Plan 1" and this is the proposed plan for the Playing Field Lease.
- (b) The Underlease Land is shown edged red on the plan annexed to this Agreement and labelled "Plan 2" and this is the land to be demised by the Academy Trust under the Underlease.
- (c) The Land is shown edged red on the plan annexed to this Agreement and labelled "Plan 3" and this is the land to be demised to the Academy Trust by a Lease made between (1) the Academy Trust and (2) The Trustees of the Knight Watson Charity

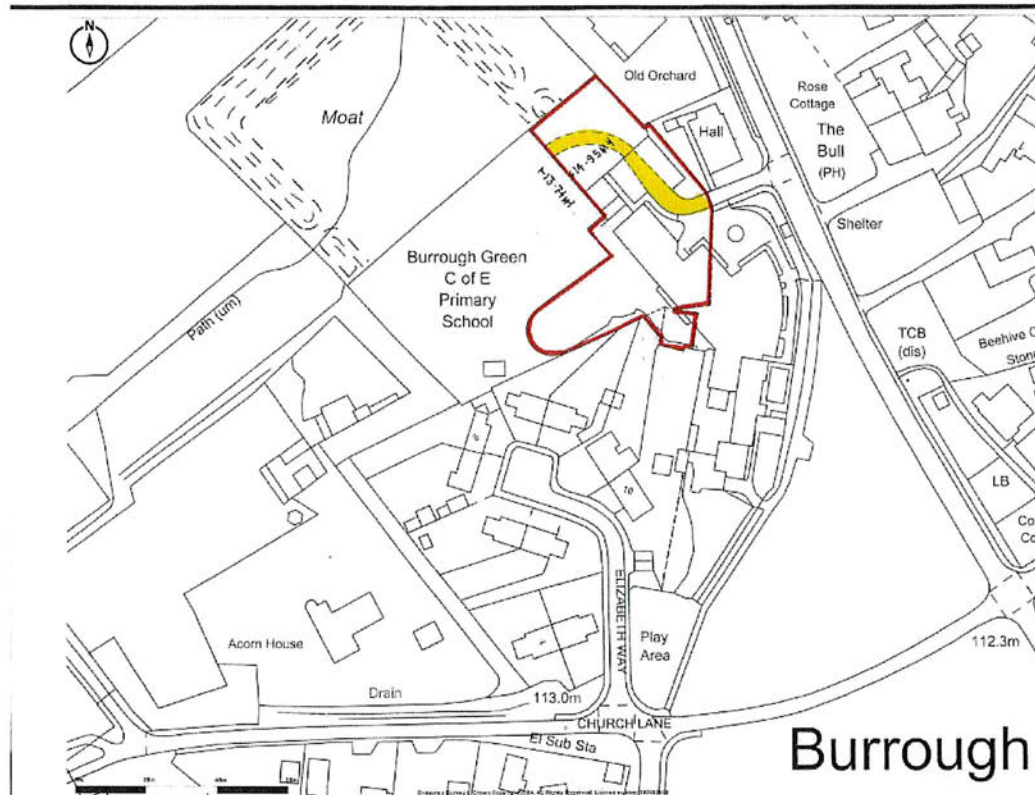
Plan 1



Plan 2



# Plan 3



This Agreement was executed as a Deed on 30 August 2024

Executed on behalf of the **Academy Trust** by:

Director

Name (Printed)

In the presence of:

Witness:

Name:

Address:

The Corporate Seal of

**THE SECRETARY OF STATE FOR EDUCATION**

affixed to this deed is authenticated by:



**Duly Authorised**

## **ANNEXES**

### **Annex A**

#### **ADMISSION OF CHILDREN AND YOUNG PEOPLE WITH EDUCATION, HEALTH AND CARE PLANS**

“EHC Plan” means an education, health and care plan made under section 37 of the Children and Families Act 2014.

The Children and Families Act 2014 imposes duties directly on Academies in respect of pupils with SEN, including the admission of pupils with EHC plans. If an Academy Trust considers that a LA should not have named the Academy in an EHC plan, it may ask the Secretary of State to determine whether the LA has acted unreasonably, and to make an order directing the LA to reconsider. The Academy Trust must admit the pupil if such a determination is pending. The Secretary of State’s determination as to whether the LA acted unreasonably will be final, subject to any right of appeal which a pupil (who is over compulsory school age) or parent of the pupil may have to the First-tier Tribunal (Special Educational Needs and Disability) or the Upper Tribunal Administrative Appeals Chamber.





Department  
for Education

© Crown copyright 2020

You may re-use this document/publication (not including logos) free of charge in any format or medium, under the terms of the Open Government Licence v2.0. Where we have identified any third party copyright information you will need to obtain permission from the copyright holders concerned.

To view this licence:

Visit: [www.nationalarchives.gov.uk/doc/open-government-licence/version/2](http://www.nationalarchives.gov.uk/doc/open-government-licence/version/2)

email: [psi@nationalarchives.gsi.gov.uk](mailto:psi@nationalarchives.gsi.gov.uk)

We welcome feedback. If you would like to make any comments about this publication, please email [AFSPD.feedback@education.gov.uk](mailto:AFSPD.feedback@education.gov.uk), quoting the title of this document. Specific project queries should be sent to the allocated project lead/lead contact.

About this publication:

enquiries [www.education.gov.uk/contactus](http://www.education.gov.uk/contactus)

download [www.gov.uk/government/publications](http://www.gov.uk/government/publications)

Reference: DfE-00214-2020



Follow us on Twitter:  
[@educationgovuk](https://twitter.com/educationgovuk)



Like us on Facebook:  
[facebook.com/educationgovuk](https://facebook.com/educationgovuk)