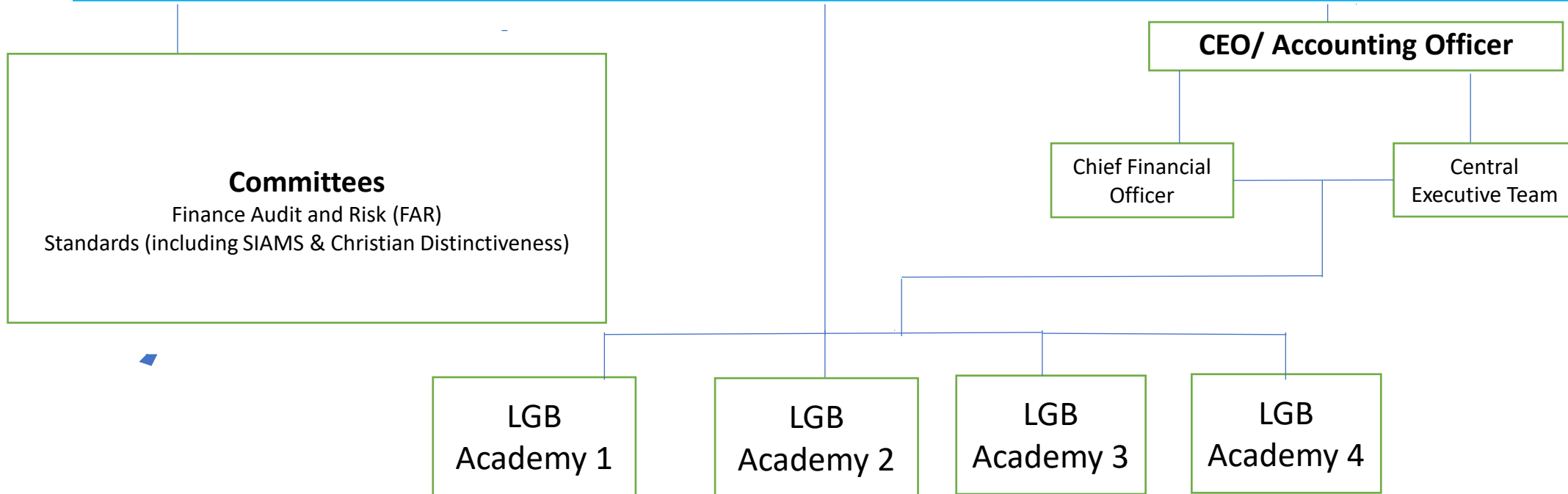


MEMBERS

TRUST BOARD (and governance professional/company secretary)
 (including skill set of Finance, Education, HR etc)



There will not be LGBs for each academy initially. These are likely to be put in place once the number of academies within the Trust reach approx. 3-5 academies.
 A Scheme of Delegation will then be put in place to establish their role and functions.
 The Trust intend to establish a Chairs Forum to enable the Chairs of LGBs to communicate directly with the Trust Board.